

Human IL-15RA/IL-15 R alpha/CD215 Protein

Cat. No. IL5-HM4RA

Description

| | |
|-------------------------|---|
| Source | Recombinant Human IL-15RA/IL-15 R alpha/CD215 Protein is expressed from HEK293 with His tag and Avi tag at the C-Terminus. It contains Ile31-Thr205. |
| Accession | Q13261-1 |
| Molecular Weight | The protein has a predicted MW of 21.3 kDa. Due to glycosylation, the protein migrates to 50-70 kDa based on Bis-Tris PAGE result. |
| Endotoxin | Less than 1EU per µg by the LAL method. |
| Purity | > 95% as determined by Bis-Tris PAGE > 95% as determined by HPLC |

Formulation and Storage

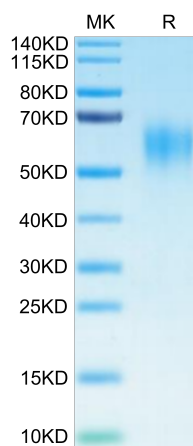
| | |
|-----------------------|---|
| Formulation | Lyophilized from 0.22µm filtered solution in PBS (pH 7.4). Normally 8% trehalose is added as protectant before lyophilization. |
| Reconstitution | Centrifuge the tube before opening. Reconstituting to a concentration more than 100 µg/ml is recommended. Dissolve the lyophilized protein in distilled water. |
| Storage | -20 to -80°C for 12 months as supplied from date of receipt. -80°C for 3 months after reconstitution. Recommend to aliquot the protein into smaller quantities for optimal storage. Please minimize freeze-thaw cycles. |

Background

Interleukin-15 receptor alpha (IL-15R alpha) is a high affinity IL-15 binding protein that is crucial for mediating IL-15 functions such as memory CD8 T cell proliferation and NK, NK/T cell, and intestinal intraepithelial lymphocyte development.

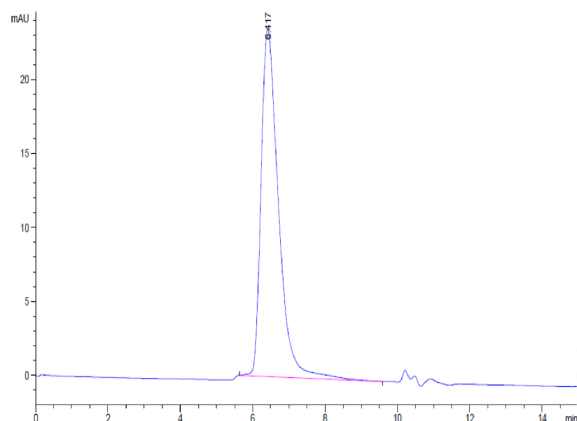
Assay Data

Bis-Tris PAGE



Human IL-15RA on Bis-Tris PAGE under reduced condition. The purity is greater than 95%.

SEC-HPLC



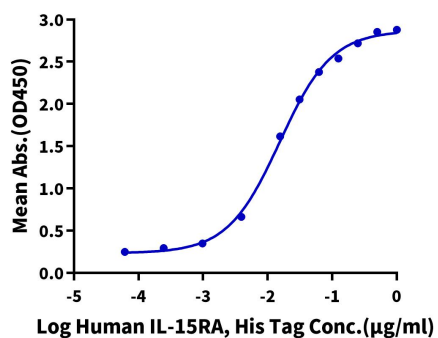
The purity of Human IL-15RA is greater than 95% as determined by SEC-HPLC.

Assay Data

ELISA Data

Human IL-15RA, His Tag ELISA

0.2µg Human IL-15, No Tag Per Well



Immobilized Human IL-15 at 2µg/ml (100µl/Well) on the plate. Dose response curve for Human IL-15RA, His Tag with the EC50 of 15.4ng/ml determined by ELISA.